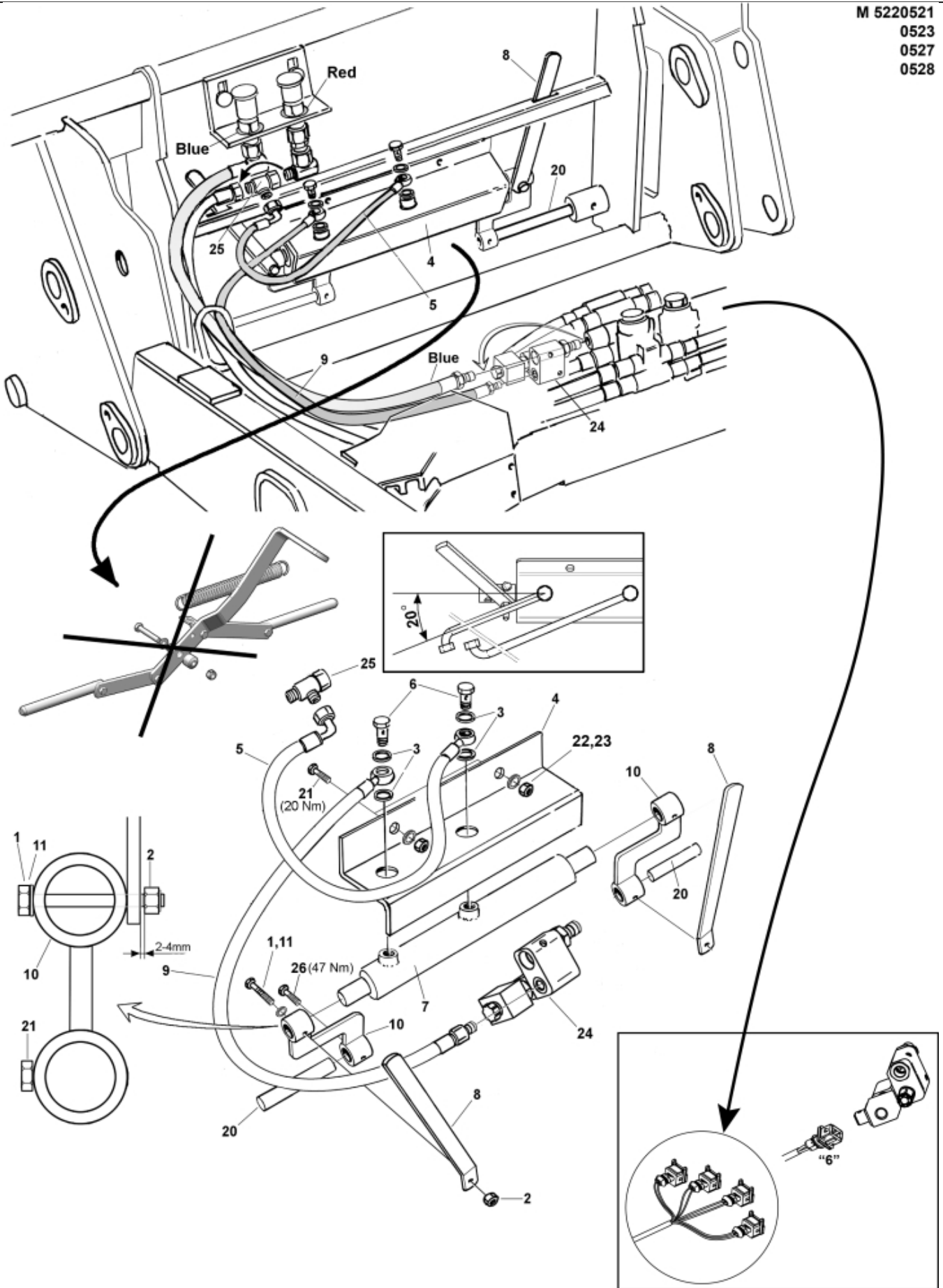


M 5220521
0523
0527
0528



Part assemblies Implement lock LCS
Specification Serial number to: 7332743

PartNo	Pos	Qty	Name	Specifications
5220521		1 PCS	Implement lock LCS	7332743
5219161		1	Locking kit	5+8 DS
5002056	1	2	• Screw	M6S 8 x 50
5011553	2	2	• Nut	M6M M8 Loc-king
5013856	3	4	• Dowty washer	Tredo 1/4"
5219153	4	1 PCS	• Protection plate	
60000143	5	1 PCS	• Hose	1/4" L=550mm (9031170)
1120166	6	2	• Banjo fitting	R1/4"
12713210	7	1	• Cylinder	Ø25/16 L=370-590 Lock cyl.
60005579		1	•• Seal kit	Implement lock. cyl.
5219154	8	2	• Indicator	
60000196	9	1 PCS	• Hose	1/4" L=1000mm (9031481)
5219145	10	2	• Adaptor	
5219125	20	2 PCS	Pin	D=20mm
5002077	21	2	Screw	M6S 10x30
5011554	22	2	Nut	Loc-King M10
5013110	23	2	Washer	BRB 10.5x22x2
10550455	24	1 PCS	Valve	
5027454	25	1	L-coupling	
5002971	26	2	Screw	M6S 10x30 Drilock
5033992		1	Safety switch cpl.	Replaces 5033991