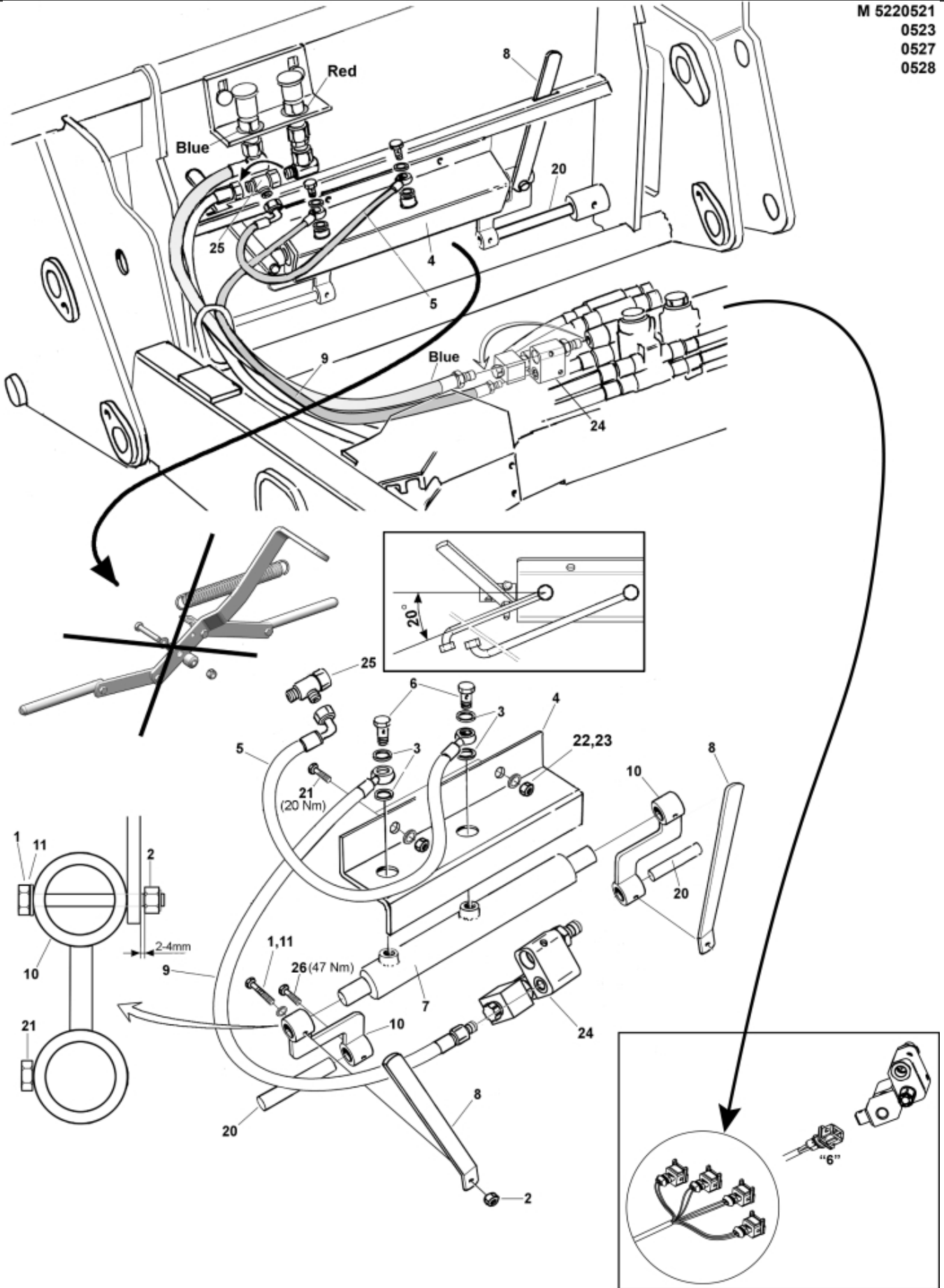


M 5220521  
0523  
0527  
0528



<b>Part assemblies</b>		Implement lock LCS		
<b>Specification</b>		Serial number to: 7332743		
<b>PartNo</b>	<b>Pos</b>	<b>Qty</b>	<b>Name</b>	<b>Specifications</b>
5220527		1 PCS	Implement lock LCS	7332743
5219346		1	Locking kit	3+8 DS
5002056	1	2	• Screw	M6S 8 x 50
5011553	2	2	• Nut	M6M M8 Loc-king
5013856	3	4	• Dowty washer	Tredo 1/4"
5219343	4	1	• Protection plate	
60000143	5	1 PCS	• Hose	1/4" L=550mm (9031170)
1120166	6	2	• Banjo fitting	R1/4"
12713910-1	7	1	• Cylinder	Ø25/16 L=430-680 Lock cyl.
5219154	8	2	• Indicator	
60000196	9	1 PCS	• Hose	1/4" L=1000mm (9031481)
5219145	10	2	• Adaptor	
5013101	11	2	• Washer	BRB 8,4 x 16
5219330	20	2	Pin	D=20mm
5002077	21	2	Screw	M6S 10x30
5011554	22	2	Nut	Loc-King M10
5013110	23	2	Washer	BRB 10.5x22x2
10550455	24	1 PCS	Valve	
5027454	25	1	L-coupling	
5002971	26	2	Screw	M6S 10x30 Drilock
5033992		1	Safety switch cpl.	Replaces 5033991