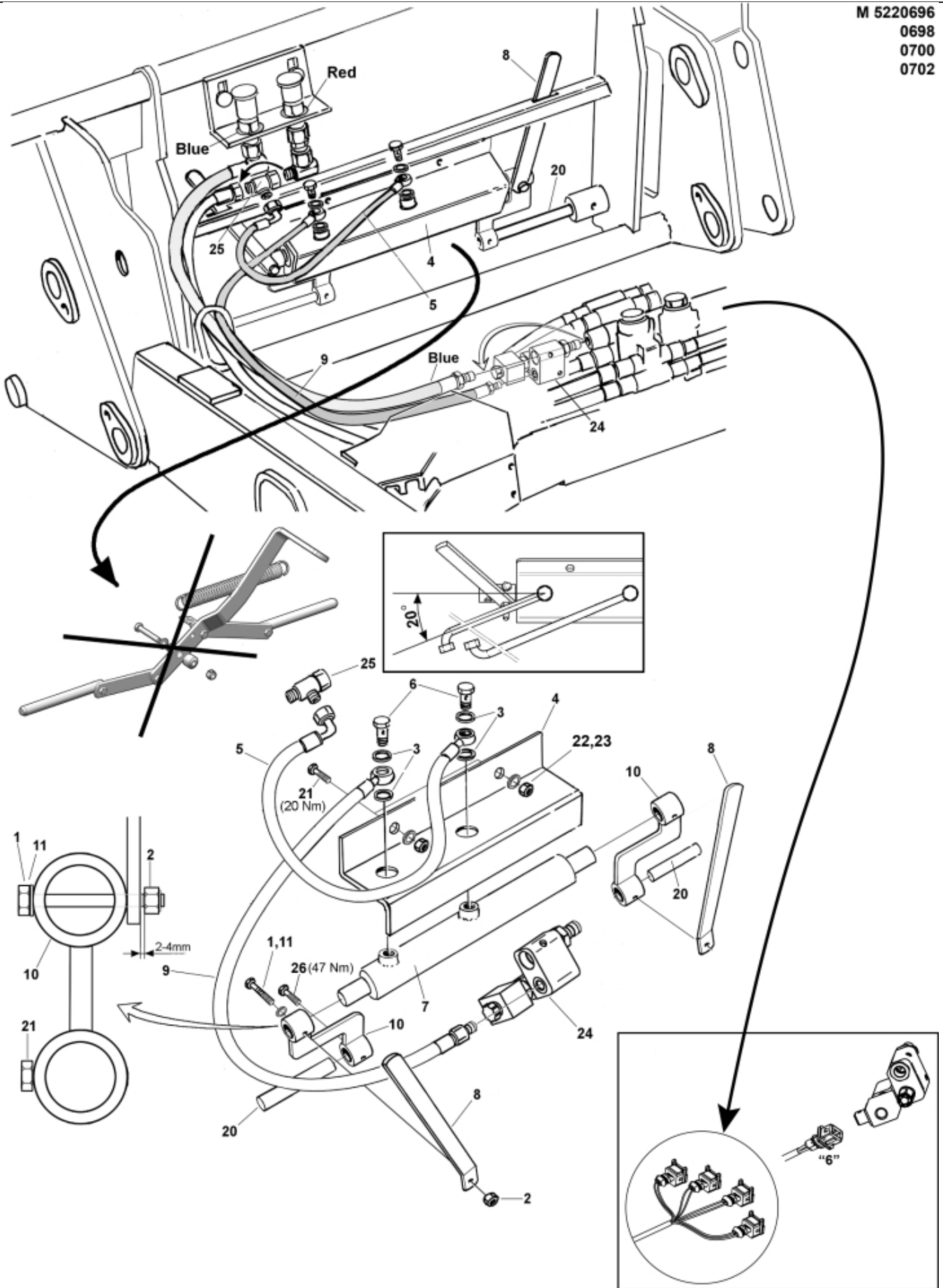


M 5220696  
0698  
0700  
0702



<b>Part assemblies</b>		Implement lock		
<b>Specification</b>		Serial number from: 7332744		
<b>PartNo</b>	<b>Pos</b>	<b>Qty</b>	<b>Name</b>	<b>Specifications</b>
5220698		1 PCS	Implement lock	7332744
5219151		1	Locking kit	5+8 DM
5002056	1	2	•• Screw	M6S 8 x 50
5011553	2	4	•• Nut	M6M M8 Loc-king
5013856	3	4	•• Dowty washer	Tredo 1/4"
5219153	4	1 PCS	•• Protection plate	
60000143	5	1 PCS	•• Hose	1/4" L=550mm (9031170)
1120166	6	2	•• Banjo fitting	R1/4"
12713210	7	1	•• Cylinder	Ø25/16 L=370-590 Lock cyl.
60005579		1	••• Seal kit	Implement lock. cyl.
5219154	8	2	•• Indicator	
60000135	9	1 PCS	•• Hose	1/4" L=1100mm (9031482)
5219145	10	2	•• Adaptor	
5219125	20	2 PCS	• Pin	D=20mm
5002077	21	2	• Screw	M6S 10x30
5011554	22	2	• Nut	Loc-King M10
5013110	23	2	• Washer	BRB 10.5x22x2
10550455	24	1 PCS	• Valve	
5027454	25	1	• L-coupling	
5002971	26	2	• Screw	M6S 10x30 Drilock
5201088			Safety switch	