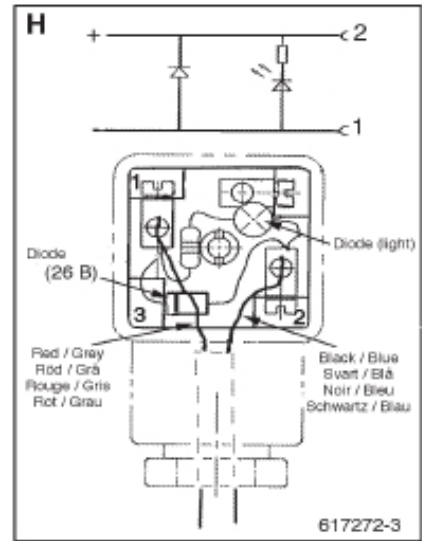
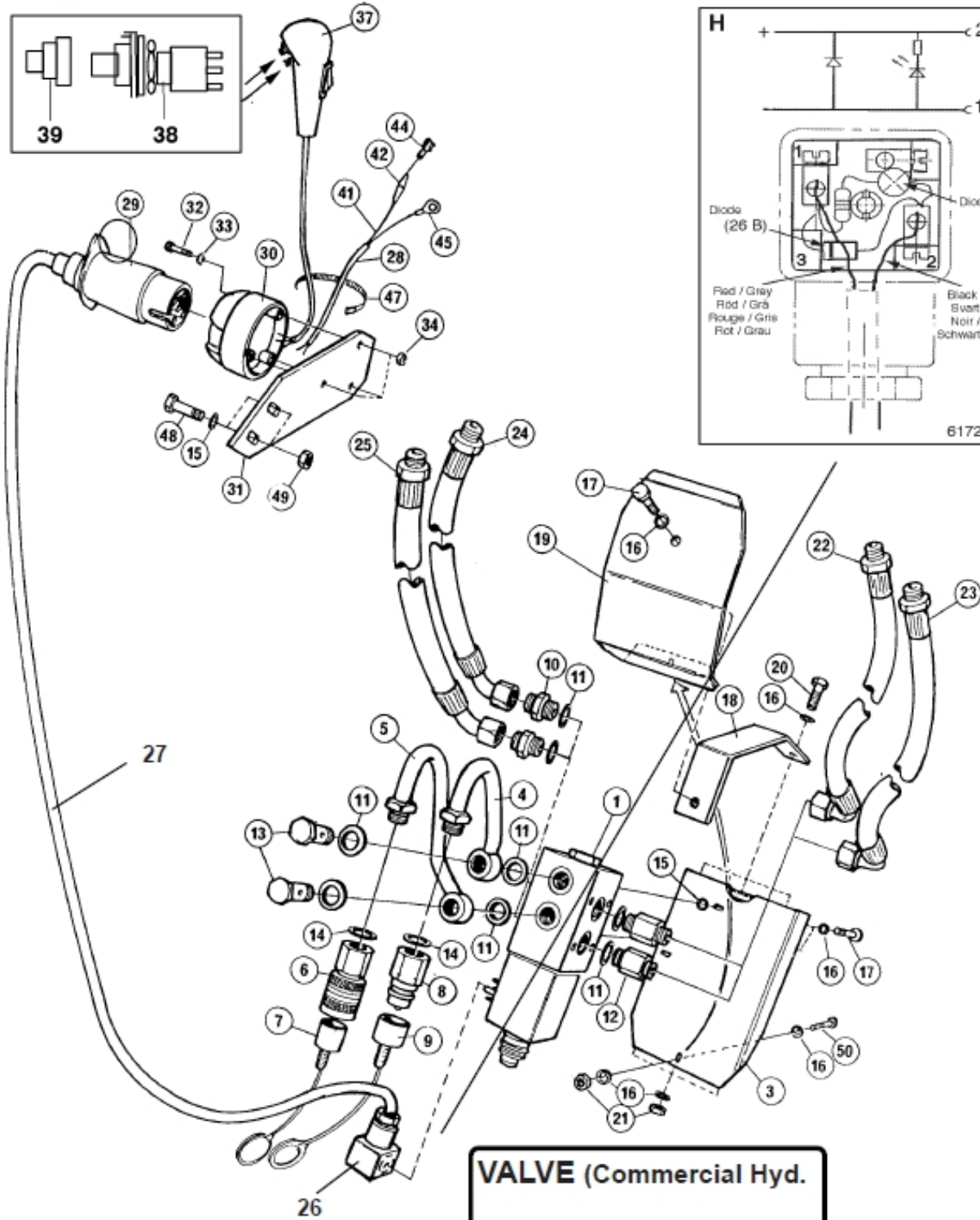
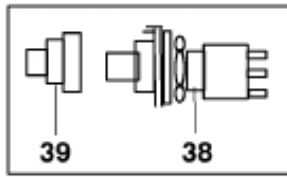


R 619401



VALVE (Commercial Hyd.)

VALVE (Intertraco)

Part assemblies Specification		SelectoQuick 3rd service Specification: Quicke 450, 600-series		
PartNo	Pos	Qty	Name	Specifications
313413		1	SelectoQuick 3rd service	Quicke 450, 600-series
516071	1	1	Valve	
313468	3	1	Valve plate	
313486	4	1	Tube	
313485	5	1	Tube	
5044127	6	1	Quick Coupling	1/2", Part is included in kit 60007907 Hose cpl., 9032177 Hose cpl.
5044130	7	1	Dust Cover	Part is included in kit 60007907 Hose cpl., 9032177 Hose cpl.
5044128	8	1	Quick Coupling	ISO-A Plug 1/2"
5044129	9	1	Dust Cover	1/2" Male
1120012	10	2	Adaptor	G 1/2"
5013853	11	8	Dowty washer	Tredo 1/2", Part is included in kit 60007907 Hose cpl., 9032177 Hose cpl.
1120118	12	2 PCS	Adaptor	
1120241	13	2	Hollow screw	
5013604	14	2	Washer	Copper 21x28x2
5013110	15	2	Washer	BRB 10.5x22x2
5013101	16	11	Washer	BRB 8,4 x 16
5002058	17	3	Screw	M6S 8x16
313483	18	1 PCS	Bracket	
313484	19	1 PCS	Cover plate	
5002055	20	3	Screw	M6S M8x40
5011053	21	4	Nut	M6M M8
1103234	22	1 PCS	Hose	R1/2" x 195
1103235	23	1 PCS	Hose	R1/2" x 245
1103236	24	1 PCS	Hose	R1/2" x 310
1103237	25	1 PCS	Hose	R1/2" x 395
5024369	26	1 PCS	Connector	
5024409	26B	1	• Diode	1 Amp./100V
5024205	27	1	Cable	
5024202	28	1 M	Harness	
5024352	29	1 PCS	Connector, male	(M)
5024351	30	1 PCS	Connector, female	(F)
313467	31	1 PCS	Connector Support	
5004003	32	3	Screw	MC6S 5 x 35
5013112	33	6	Washer	5,3x10x1,5
5011051	34	3	Nut	M6M 5
5024414	37	1 PCS	Handle	
5024365	38	2	• Switch	A 294813
5024366	39	2	• Boot	A 294814
5024201	41	1	Cable	
5024356	42	1	Fuse holder	
5024111	44	1	Cable lug	
5024112	45	1	Cable terminal	
5033621	47	10	Cable tie	4.6x150
5002077	48	2	Screw	M6S 10x30
5011054	49	2	Nut	M6M M10
5002051	50	1	Screw	M6S 8 x 20