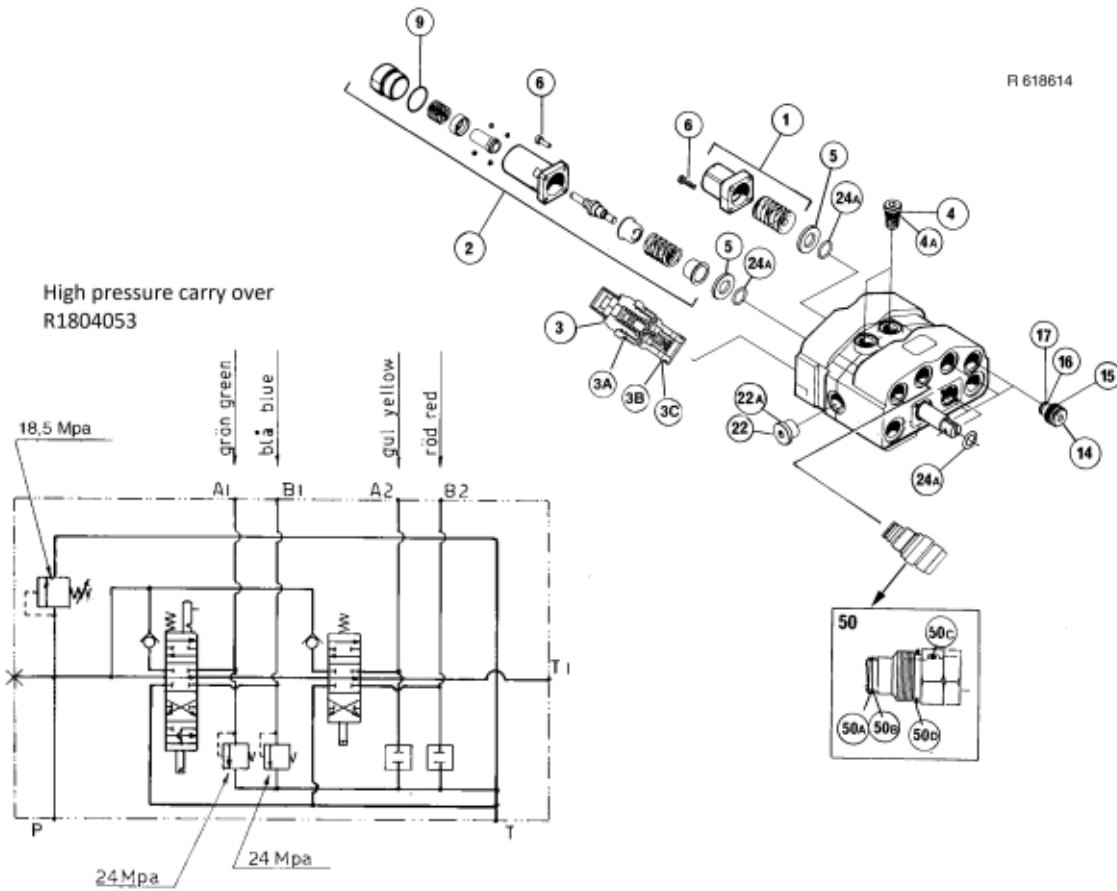
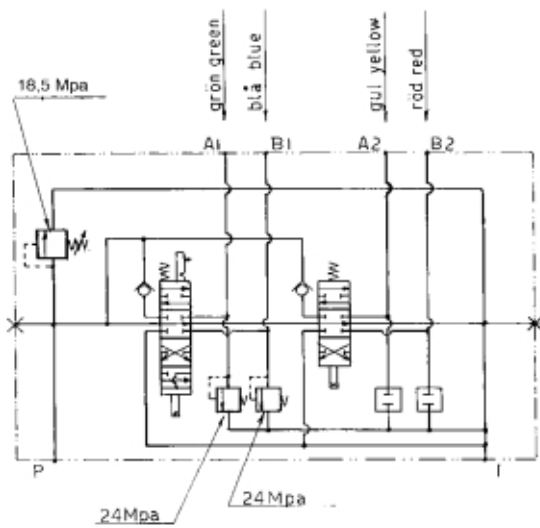


R 618614

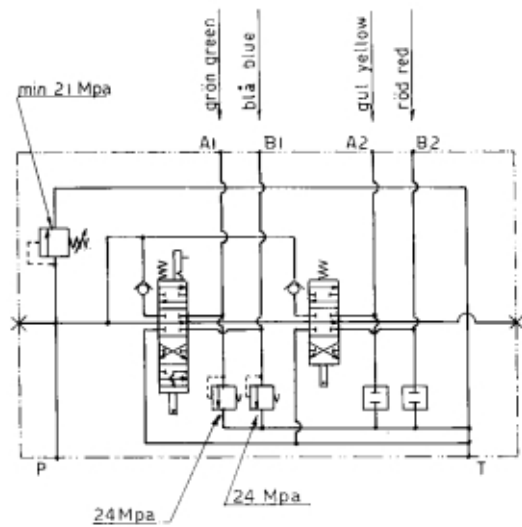
High pressure carry over
R1804053



Parallell connection
R1804052



Constant pressure connection
R1804054



Description Walvoil SDM 143/2 with unloading valves
Part assemblies Control valve
Specification Specification: SDM 143/2

PartNo	Pos	Qty	Name	Specifications
521782			Control valve	SDM 143/2 Four plugs (pos 14)
521822			Control valve	SDM 143/2 Two plugs (pos 14) and Two Unloading valves (pos 50)
521685	1	1 PCS	Slide Control	
550001	2	1 PCS	Slide Control	(Float position)
521895	3	1 PCS	Relief Valve	X134213185 185 Bar
5037017	3A	1 PCS	O-ring	20,35 x 1,78 (70Sh)
5038434	3B	1 PCS	Support Ring	16,35 x 1.35
5037056	3C	1 PCS	O-ring	17,17 x 1,78 (75Sh)
521688	4	2	Check valve	XKIT 010000
5037057	4A	1 PCS	O-ring	14,00 x 1,78 (70Sh)
521689	5	2 PCS	Seal Retainer	3ANE134041
5004001	6	8 PCS	Screw	4VIT605016
5037068	9	1 PCS	O-ring	26,70 x 1,78 (70Sh)
521692	14	2 PCS	Plug	3XTAP524290
5037054	15	1 PCS	O-ring	18,77 x 1,78 (70Sh)
5038428	16	1	Support Ring	13,16 x 1,2
5037059	17	1	O-ring	12,42 x 1,78 (70Sh)
521690	22	1 PCS	Plug	TCCI BSPP 1/2"
5037277	22A	1 PCS	O-ring	18,72 x 2,62 (90Sh)
5036212	24	2 PCS	Sealing Set	
521804	50	2 PCS	Unloading valve	240 bar
5037059	50A	1	O-ring	12,42 x 1,78 (70Sh)
5038428	50B	1	Support Ring	13,16 x 1,2
5037054	50D	1 PCS	O-ring	18,77 x 1,78 (70Sh)
521683		1 PCS	Pressure Carry Over Adaptor	1/2" BSP
521684		1	Pressure Carry Over Adaptor	3/4" BSP
10550061		1	Pressure Carry Over Adaptor	1 1/16" JIC